

## Russian Language and the Culture of Russia: Second-round Sample Tasks for the Open Doors Bachelor's Track

This sample test comprises 43 tasks, including: 25 entry-level tasks, each correct answer assigned 1 point; 15 intermediate-level tasks, each correct answer assigned 3 points; 3 advanced-level tasks requiring a detailed answer, each correct answer assigned up to 10 points, depending on its correctness and completeness.

For advanced-level tasks requiring a detailed answer, assessment criteria, and a standard answer are provided.

### Field of study 1. Russian Language. Languages of Russia's Ethnic Groups

#### Task 1

##### Entry level (1 point)

Which language, alongside Russian, is officially recognized in the Republic of Tatarstan of the Russian Federation?

- a) Bashkir
- b) Tatar**
- c) Chechen
- d) Yakut

#### Task 2

##### Entry level (1 point)

What grammatical category of the Russian verb indicates how an action takes place or is completed over time?

- a) aspect**
- b) transitivity
- c) mood
- d) voice

#### Task 3

##### Entry level (1 point)

What is the name of the part of speech in the Russian language that denotes an object, person, or phenomenon, and answers the questions “who?” or “what?”?

- a) verb
- b) adverb
- c) noun**
- d) gerund

#### Task 4

##### Entry level (1 point)

How many grammatical genders are there in the Russian language?

- a) 2
- b) 3**
- c) 4
- d) 1

**Task 5**  
**Entry level (1 point)**

**Which case is not present in modern Russian?**

- a) genitive case
- b) nominative case
- c) vocative case**
- d) prepositional case

**Field of study 2. Literary theory and Critical Literary Practice**

**Task 6**  
**Entry level (1 point)**

Read the excerpt from the poem by Afanasy Fet and identify its poetic genre.

The roiling clouds were thrilling in the scarlet luster,  
The evening fields were luxuriant and moist,  
And for the last time, at the third pass the driver  
Disappeared, the team raising no dust.

No habitations were seen in the broad view.  
Hearth and song far off — no surprise!  
All was steppe. More steppe. Boundless as the sea  
With rolling waves of ripening rye.

- a) philosophical lyric poem
- b) civic lyric poem
- c) landscape lyric poem**
- d) religious lyric poem

**Task 7**  
**Entry level (1 point)**

Match the definition with the term:

\_\_\_\_\_ is a literary device used to strengthen or weaken of the meaning of homogeneous parts of the sentence is created from the first to the last. It can be direct (ascending) or reverse (descending).

- a) Fronting
- b) Parallelism
- c) Anaphora
- d) Gradation**

**Task 8**  
**Entry level (1 point)**

What is the genre of Leo Tolstoy's *War and Peace*?

- a) novel
- b) story

- c) **epic novel**
- d) epic

**Task 9**  
**Entry level (1 point)**

Which term refers to the creator of a literary work?

- a) character
- b) narrator
- c) **author**
- d) storyteller

**Task 10**  
**Entry level (1 point)**

Which of the following poets belongs to the literary movement *imagism*?

- a) Alexander Pushkin
- b) Marina Tsvetaeva
- c) **Sergei Yesenin**
- d) Mikhail Lermontov

**Field of study 3. Mass Communication**

**Task 11**  
**Entry level (1 point)**

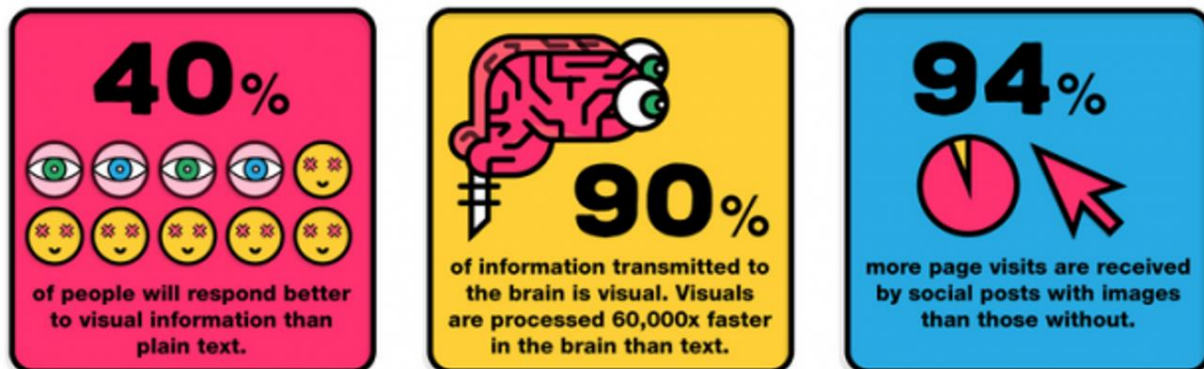
Read the statement and select the word that best completes its meaning.

The rapid development of internet technologies has enabled audiences to access new media anytime and anywhere. Thus, another key feature of new media is their \_\_\_\_\_.

- a) multimediality
- b) **accessibility**
- c) free-of-charge basis
- d) hyperactivity

**Task 12**  
**Entry level (1 point)**

Look at the image and answer the question:



According to the infographic above, what percentage of information does a person receive through vision?

- a) 40 %
- b) **90 %**
- c) 94 %
- d) Visual information is processed 60000 times slower than the text.

**Task 13**  
**Entry level (1 point)**

Which functional style forms the foundation of mass media language?

- a) scientific
- b) literary
- c) conversational
- d) official
- e) **journalistic**

**Task 14**  
**Entry level (1 point)**

Which of the following is the main feature of Internet communication?

- a) **The format of Internet communication allows using both verbal and nonverbal means.**
- b) Internet communication uses only verbal means.
- c) Internet communication uses only nonverbal means.

**Task 15**  
**Entry level (1 point)**

Which of the following options lists characteristics of newspaper language?

- a) immediacy, easiness, and simplicity
- b) standardization, logical nature, and neutrality
- c) **combination of standard and expressive elements**
- d) figurativeness, metaphorical nature, and personal message

**Field of study 4. Theoretical, Applied and Comparative Linguistics**

**Task 16**  
**Entry level (1 point)**

Which branch of linguistics studies the structure and forms of words?

- a) phonetics
- b) **morphology**
- c) syntax
- d) lexicology

**Task 17**  
**Entry level (1 point)**

What kind of information does the following sentence convey?

*This flower is beautiful.*

- a) **evaluative**
- b) factual
- c) instructive
- d) emotional-expressive

**Task 18**  
**Entry level (1 point)**

Different pronunciation of a word in different regions is a manifestation of which of the following?

- a) jargon/argot
- b) professional lexis
- c) **dialect**
- d) slang

**Task 19**  
**Entry level (1 point)**

What is the main information contained in the following sentence?

*Despite the rain, the football match took place and ended with a score 2-1.*

- a) The weather was sunny.
- b) **Despite poor weather conditions, the match took place with a specific result.**
- c) The game was rescheduled for another day.
- d) The members of the audience were dissatisfied.

**Task 20**  
**Entry level (1 point)**

Which means of informational-semantic processing corresponds to the abbreviation *i.e.*?

- a) **explanation**
- b) citation
- c) generalization
- d) substantiation

**Field of study 5. Cultural Studies**

**Task 21**  
**Entry level (1 point)**

Which drink was traditional for Russian 19th-century cuisine?

- a) kefir
- b) **kvass**
- c) mors
- d) tea

**Task 22**  
**Entry level (1 point)**

Which of the following writers was the first Russian Nobel Prize winner in literature?

- a) Aleksandr Solzhenitsyn
- b) Boris Pasternak

- c) Ivan Bunin
- d) Mikhail Sholokhov

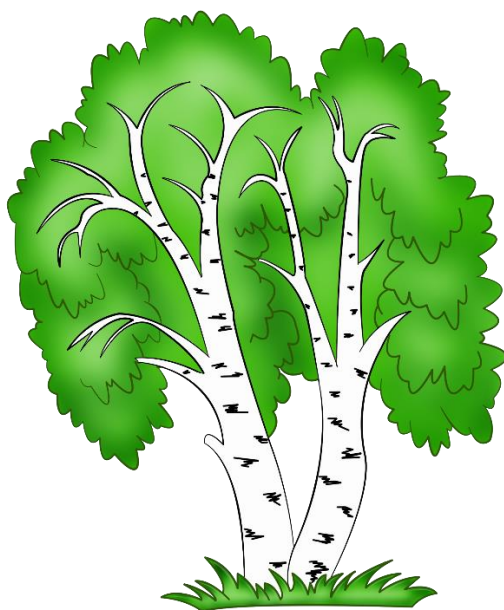
**Task 23**  
**Entry level (1 point)**

Which category of culture incorporates customs and traditions?

- a) material
- b) spiritual**
- c) social
- d) artistic

**Task 24**  
**Entry level (1 point)**

Which of the following trees is a symbol of Russia?



**a) birch**



**b) maple**



c) oak

**Task 25**  
**Entry level (1 point)**

Who of the following cultural figures is a famous Russian composer?

- a) Ivan Aivazovsky
- b) Alexander Pushkin
- c) **Sergey Prokofiev**

**Field of study 1. Russian Language. Languages of Russia's ethnic groups**

**Task 26**  
**Intermediate level (1-3 points)**

What dictionaries are used to clarify the meaning of a Russian word and specify its pronunciation and spelling? There are 3 correct answers.

- a) **Explanatory Dictionary of the Russian Language**
- b) **Orthographic Dictionary of the Russian language**
- c) Dictionary of Difficult Words of the Russian Language
- d) **Orthoepic Dictionary of the Russian Language**

**Task 27**  
**Intermediate level (1-3 points)**

What tense forms do Russian verbs have? There are 3 correct answers.

- a) **Present**
- b) **Past**
- c) **Future**
- d) Past Perfect

**Task 28**  
**Intermediate level (1-3 points)**

Mark the correct statements about adjectives in the Russian language. There are 3 correct answers in this task.

- a) **Russian adjective changes according to cases**
- b) **Russian adjective changes according to numbers**
- c) **Russian adjective changes according to genders**
- d) Russian adjective can only be inflected
- e) the form of an adjective depends on the verb

## Field of study 2. Literary theory and Critical Literary Practice

### Task 29

Intermediate level (1-3 points)

What were the main themes in the works of Vladimir Mayakovsky? There are 3 correct answers.

- a) **theme of love**
- b) **theme of revolution**
- c) theme of friendship
- d) theme of nature
- e) **theme of struggle against bourgeoisie**

### Task 30

Intermediate level (1-3 points)

Which of the following examples employ the figure of speech known as simile? There are 3 correct answers.

- a) Transparent glass of empty sky (A. Akhmatova)
- b) **Anchor, like a formidable sentry (A. Pushkin)**
- c) The curly twilight (S. Yesenin)
- d) **Like a flock of butterflies (S. Yesenin)**
- e) **Crystal-like, like day at a distance (F. Tyutchev)**

### Task 31

Intermediate level (1-3 points)

Which of the following poets represent the Golden Age of Russian poetry? There are 3 correct answers.

- a) Anna Akhmatova
- b) **Alexander Pushkin**
- c) Vladimir Mayakovsky
- d) **Mikhail Lermontov**
- e) **Fyodor Tyutchev**

## Field of study 3. Mass Communication

### Task 32

Intermediate level (1-3 points)

Which of the following tendencies are characteristic of the language of modern Internet communication? There are 3 correct answers.

- a) **rapid updating**
- b) stability and static nature



- c) **convergence of literary styles with conversational language**
- d) increasing complexity of the language system
- e) **variability**

**Task 33**

**Intermediate level (1-3 points)**

List the professions that are solely related to mass media activities. There are 3 correct answers.

- a) **correspondent**
- b) **journalist**
- c) **TV presenter**
- d) politician
- e) editor

**Task 34**

**Intermediate level (1-3 points)**

Which of the following genres fall under the journalistic style? There are 3 correct answers.

- a) **report**
- b) monograph
- c) **feature article**
- d) scientific article
- e) **interview**

**Field of study 4. Theoretical, Applied and Comparative Linguistics**

**Task 35**

**Intermediate level (1-3 points)**

Which types of information prevail in the following fragment? There are 3 correct answers.

*According to statistics, 70% of accidents result from traffic violations.  
Experts stress that the situation calls for urgent action. Thus, always keep your  
attention on the road safety while driving.*

- a) **factual (statistics)**
- b) emotional-expressive
- c) **evaluative (expert opinion)**
- d) **instructive**

**Task 36**

**Intermediate level (1-3 points)**

Which of the following characteristics are typical of scientific style? There are 3 correct answers.

- a) **use of terminology and unambiguity of formulations**
- b) **lack of emotional-evaluative vocabulary**
- c) **logical nature of presentation and evidence-based arguments**
- d) colloquial abbreviations and incomplete sentences

**Task 37**

**Intermediate level (1-3 points)**

Which of the following genres fall under the conversational style? There are 3 correct answers.

- a) **conversation**
- b) conference presentation
- c) lecture
- d) **quarrel**
- e) **personal message**

**Field of study 5. Cultural Studies**

**Task 38**

**Intermediate level (1-3 points)**



Name the author of the given work of art. Provide your answer in the format *I.I. Ivanov*.

**Answer: V.M. Vasnetsov.**

**Task 39**

**Intermediate level (1-3 points)**

Which of the following traditions belong to Russian folk culture? There are 3 correct answers.

- a) **Dymkovo toy**
- b) knight tournaments
- c) **Gzhel folk craft**
- d) music festivals
- e) opera and ballet
- f) **Khokhloma folk craft**

**Task 40**

**Intermediate level (1-3 points)**

Match the holiday with its symbol:

- |  |            |
|--|------------|
| 1) Maslenitsa                          | a) flowers |
| 2) Easter                              | b) blini   |
| 3) International Women's Day (March 8) | c) kulich  |

**Answer: 1b, 2c, 3a.**

## Field of study 5. Cultural Studies

### Task 41 Advanced level (1-10 points)

Using the provided seven fragments, create a coherent text consisting of five paragraphs. Arrange the paragraphs in the correct order.

Russian ballet dancers begin their training at a young age. They train for many years to reach a high level of skill. The technique of Russian ballet requires strength, flexibility, and precision.

Russian ballet is a special kind of dance that combines music, dance, and theatrical art. It is known for its beauty and complexity. Russian ballet attracts people from all over the world.

Alexander Pushkin loved Russian nature very much.

In Russia, there are many famous theaters where ballets are performed. The Bolshoi Theatre in Moscow and the Mariinsky Theatre in St. Petersburg are the most renowned. These theaters draw audiences with their stunning performances.

Russian ballet has had a significant influence on dance in other countries. Many foreign dancers come to Russia to learn this art form. Russian ballet continues to inspire people around the world with its beauty and emotional depth.

Russian ballet emerged in Russia in the 18th century. In the 19th century, it became very popular thanks to great composers like Pyotr Ilyich Tchaikovsky. Many classic ballets were created during this time.

He dedicated many poems to her beauty.

#### Standard answer

Russian ballet is a special kind of dance that combines music, dance, and theatrical art. It is known for its beauty and complexity. Russian ballet attracts people from all over the world.

Russian ballet emerged in Russia in the 18th century. In the 19th century, it became very popular thanks to great composers like Pyotr Ilyich Tchaikovsky. Many classic ballets were created during this time.

In Russia, there are many famous theaters where ballets are performed. The Bolshoi Theatre in Moscow and the Mariinsky Theatre in St. Petersburg are the most renowned. These theaters draw audiences with their stunning performances.

Russian ballet dancers begin their training at a young age. They train for many years to reach a high level of skill. The technique of Russian ballet requires strength, flexibility, and precision.

Russian ballet has had a significant influence on dance in other countries. Many foreign dancers come to Russia to learn this art form. Russian ballet continues to inspire people around the world with its beauty and emotional depth.

Maximum score (points)	Criterion 1	Criterion 1 score (points)	Criterion 2	Criterion 2 score (points)	Criterion 3	Criterion 3 score (points)
10	<b>Correct paragraph choice</b> Each correctly chosen paragraph earns 1 point.	5	<b>Correct paragraph sequence</b> The sequence is correct (2 points). The sequence is partially correct (1 point). The sequence is incorrect (0 points).	2	<b>Coherence</b> The text is coherent (3 points). The text is partially coherent (1-2 points). The text is not coherent (0 points).	3

## Field of study 2. Literary theory and Critical Literary Practice

### Task 42 Advanced level (1-10 points)



Tell us what you know about Alexander Pushkin and his work. Your response should contain a minimum of 80 words.

#### Standard answer

Alexander Sergeyevich Pushkin is one of the most significant and influential Russian poets who lived in the early 19th century. He is considered the founder of modern Russian literary language. Pushkin created numerous works that span various genres, from lyric poetry to prose and drama. He masterfully combined folk traditions with European literary influences, creating a unique style. His works are filled with deep reflections on love, freedom, fate, and human nature. Pushkin had

a significant impact on subsequent writers and became a symbol of Russian culture. His life and work remain relevant and inspiring for many generations of readers.

Maximum score (points)	Criterion 1	Criterion 1 score (points)	Criterion 2	Criterion 2 score (points)	Criterion 3	Criterion 3 score (points)
10	<b>Knowledge about the writer</b> A participant demonstrates deep knowledge of the writer (3 points). A participant demonstrates superficial knowledge of the writer (1-2 points). Knowledge about the writer is not demonstrated (0 points).	3	<b>Coherence and logical progression of reasoning</b> The response is well-structured, logical, and understandable (3 points). The response is generally structured, logical, and clear, though it contains some consistency flaws (1-2 points). The response lacks structure, logic, and clarity (0 points). 1 point can be added for quoting the work. For not meeting the specified word threshold, 1 point will be deducted.	3-4	<b>Adherence to linguistic norms</b> Linguistic norms are fully observed (3 points). the norms are partially adhered (1-2 points). Linguistic norms are partially observed (0 points). For more than five spelling, punctuation, grammatical, or speech errors, 1 point is deducted. For the use of expressive artistic devices, depth in topic development, one point may be added for the use of rhetorical figures, depth of topic development, other merits of the statement, and the overall impression.	3-4

## Task 43

**Advanced level (1-10 points)****Field of study 3. Mass Communication****Field of study 4. Theoretical, Applied and Comparative Linguistics**

Provide definitions for term 1, term 2, and term 3 (based on the terms presented in the text).

Please note that the text does not define terms 2 and 3.

What is virtual communication? It is communication occurring in a virtual environment using a specific discourse that has developed within computer networks, featuring distinct etiquette (netiquette), norms, restrictions, and a unique emotional atmosphere. This communication is primarily textual, consisting of transmitted messages. It is not a one-way message transmission as the circle of addressees and senders and recipients are known.

Virtual communication is...

Etiquette is...

Circle of addressees is...

**Standard answer**

Virtual communication is a form of interaction occurring in a virtual environment through text-based messages, characterized by a unique style, norms, and emotional atmosphere on the Internet. Etiquette is a set of norms and rules governing the behavior of participants in virtual communication, encompassing social conventions, restrictions, and recommendations for online conduct.

Circle of addressees refers to the group of individuals who receive messages within virtual communication, where both senders and receivers are known to each other.

Maximum score (points)	Criterion 1	Criterion 1 score (points)	Criterion 2	Criterion 2 score (points)	Criterion 3	Criterion 3 score (points)
10	<b>Definition adequacy</b> Key features of the terms are identified (3 points). Some, but not all, key features are mentioned. (1-2 points). The definition contains significant inaccuracies or incorrect formulations, or the response lacks necessary	3	<b>Contextual appropriateness and logic</b> The definition accurately aligns with the context and logic of the text (4 points). It is clear which term is being defined, but the definition is incomplete or partially inaccurate (2-3 points). The general semantics of the term can be understood, but	4	<b>Number of correctly defined terms</b> 1 point for each correctly defined term.	3

	information (0 points).		there are numerous linguistic or communication errors (1 point). The definition does not correspond to the term or context. (0 points).			
--	-------------------------	--	---	--	--	--